

AbleBridge Project Management

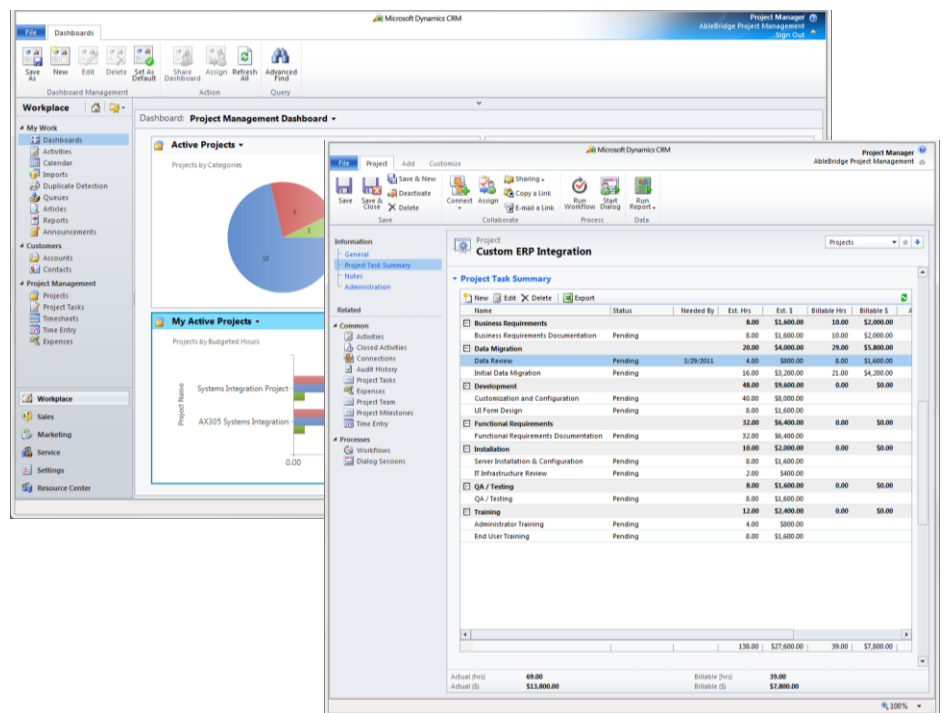
Integrated Project Management within Microsoft Dynamics CRM

BENEFITS

- **Increase operational efficiency.** Easily manage projects with greater visibility and efficiency so you can make quick and accurate decisions and ensure the success of every project.
- **Preserve project profitability.** Effectively allocate internal resources and increase billable hours through better alignment of project information and resources.
- **Streamline project accounting.** Real-time dashboard gives you the visibility you need to see if the project is on time and within budget. Project managers know immediately whether the project is behind schedule or ahead of schedule.
- **Flexible time management.** Easily capture project time through a single or bulk time entry view. Time entry approval workflows provide consistent operations for resource utilization and project billing throughout the project lifecycle.
- **Improve service.** Empower project managers with the tools and information they need to efficiently and profitably deliver high-quality projects and provide real-time customer progress reports for proactive customer management.
- **Monitor project and resource performance.** Track key performance indicators across the project through rich dashboards and reports, ensure time entry compliance and benchmark measure resource utilization across the organization.

Optimize project planning, improve project execution and drive resource productivity through effective resource management and greater project and task visibility.

Professional services firms are challenged with selling an intangible product that is difficult to quantify and ever-changing. Profitability requires that projects are estimated correctly and completed on time, while meeting or exceeding customer requirements. A well-defined and executed project management strategy, with Microsoft Dynamics CRM at its center, helps your organization streamline operations while allowing your people to share information, work together, and make effective decisions.



A powerful CRM platform. The familiar Microsoft Dynamics CRM interface makes it easy for project managers to do their best work with minimal training. Ease of integration with Microsoft products and technologies helps expand the reach of CRM information to project teams and executive decision makers.



AbleBridge Project Management

Integrated Project Management within Microsoft Dynamics CRM

FEATURES	BENEFITS
Centralized Project Management	Centralized view of the overall project information; project tasks, project team, budgets, milestones, time and expense management and resource utilization. Create project templates to reduce administrative time and instill consistency when defining new projects.
Project Task Summary View	Real-time project task summary provides you with quick visibility into a project's estimated time vs. billable time vs. actual time spent for each project task and project milestone. Export to Excel feature provides real time project status reports for internal and external project reviews.
Task Management	Group project tasks by category for efficient project accounting and resource time management. Convert incoming emails to a project task and assign a resource right from within Microsoft Outlook so you can respond to customer change requests faster. Track project task estimates by actual time spent vs. billable time so you can manage cost overruns and improve future estimates.
Workflow Automation	Automated alerts and customizable workflow streamlines task assignment, status updates and facilitates communication across the project team. Copy existing projects to maintain consistency in project structure and reduce the administrative time it takes for new project set up.
Time Management	Record project time for multiple customers, projects and tasks from one simple interface. Timesheets allow for quick bulk time entry and approval workflows provide the oversight necessary to keep the project on track and within budget. Resource utilization and capacity planning is easily measured against key performance targets.
Invoice Integration	Create an invoice that automatically pulls in project time entries so you can generate and send customized PDF invoices with just a few clicks. Includes native integration to the Invoice entity in Microsoft Dynamics CRM which can also be used to integrate with other accounting software packages.
Expense Tracking	Simple expense reporting features provide a defined expense tracking process for project related expenses. Manage travel and entertainment expenses and mark expenses that are billable, capitalized or to be reimbursed. Expenses can be associated with projects or tasks for effective job costing and accounting.
Dashboards	Real-time dashboards provide a quick graphical view of the current health of your projects. Identify those projects that are on track and those that are behind and drill down into the details to identify the root cause of any problems for quick resolution.
Document Management	Track project documents in Microsoft Dynamics CRM for simple document management or employ native integration with Microsoft SharePoint for more robust document management capabilities.
Fast, Flexible, and Easy to Deploy	Get up and running quickly using Microsoft Dynamics CRM as an online solution, or deploy an on-premises solution. Regardless of the deployment option, you get the same great user experience and project management solution.

About AbleBridge

At AbleBridge, our mission is to help any organization streamline their business operations and increase business success with the Microsoft Dynamics CRM platform.

Our experience is delivering CRM project success.

We have been implementing CRM technology dating back to the inception of Contact Management applications through the evolution to Sales Force Automation and ultimately Customer Relationship Management (CRM) systems. Our logical CRM project implementation methodology is proven and is always focused on project success.

We know Microsoft Dynamics CRM.

At AbleBridge we are 100% focused on Microsoft Dynamics CRM and the Microsoft Technology platform. Our involvement with Microsoft CRM dates back to the first release in 2002 and through its evolution into the market leading CRM platform it is today. In 2006 AbleBridge made the strategic decision to solely focus on Microsoft Dynamics CRM and we've never looked back. The flexibility of the platform, familiar user interface, interoperability with Microsoft Office, including Outlook, and its top flight functionality make it the best investment choice for any organization looking to implement a CRM technology strategy.

Focused on Your Success

AbleBridge's key strengths are our people and their personal commitment to the success of each customer engagement. Our logical approach to every project, the quality of our effort, the seriousness and professionalism we bring to the table have been the keys to our success; and we measure our success by our customer's success.

For more information about [Project Management for Microsoft Dynamics CRM](#), contact us @ 877-600-2253 or visit www.ablebridge.com

